

**APEC ENGINEER REGISTER  
ASSESSMENT STATEMENT**



**Asia-Pacific  
Economic Cooperation**

**By**

**CHINESE TAIPEI**

**Submitted on June 10 2005**

**First Revised in June 2007**

**APEC ENGINEER REGISTER**  
**ASSESSMENT STATEMENT**

**Proposed by**  
**CHINESE TAIPEI**

**Contents**

<b>PREFACE .....</b>	<b>3</b>
<b>PART A CHINESE TAIPEI APEC ENGINEER MONITORING COMMITTEE .....</b>	<b>5</b>
A.1 MAIN TASKS OF THE COMMITTEE .....	5
A.2 MEMBERS OF THE COMMITTEE .....	6
A.3 ORGANIZATION OF CHINESE TAIPEI APEC ENGINEER MONITORING COMMITTEE.....	8
A.4 OPERATION.....	9
A.5 ESTABLISHMENT OF ASSESSMENT PANELS AND PRELIMINARY REVIEW TEAMS .....	9
<b>PART B ASSESSMENT MECHANISMS.....</b>	<b>11</b>
B.1 RECOGNITION OF HIGHER ENGINEERING EDUCATION PROGRAMS .....	11
(I) Requirements stipulated in the Manual .....	11
(II) Education System of the Chinese Taipei.....	12
(III) Higher Education System of the Chinese Taipei .....	13
(IV) Proposed Accreditation Mechanism for Higher Education System of the Chinese Taipei.....	13
(V) Proposed Criteria of the Chinese Taipei .....	15
B.2 ASSESSMENT MECHANISM FOR INDEPENDENT PRACTICE.....	16
(I) Qualification and Requirements Essential for Independent Practice in the Chinese Taipei.....	16
(II) Registration and Practicing Status of Local Professional Engineers..	17

B.3	ASSESSMENT ON COMPETENCY OF PRACTICAL EXPERIENCE .....	18
(I)	Assessment on Compulsory Units.....	19
(II)	Assessment on Elective Units .....	19
(III)	Interview .....	20
B.4	CONTINUING PROFESSIONAL DEVELOPMENT .....	20
B.5	CODES OF CONDUCT .....	22
B.6	AUDIT OF APEC ENGINEERS .....	22
<b>PART C</b>	<b>ENGINEERING DISCIPLINES .....</b>	<b>24</b>
<b>PART D</b>	<b>APPLICATION GUIDELINES .....</b>	<b>25</b>
<b>ATTACHMENTS</b>	<b>.....</b>	<b>26</b>
ATTACHMENT 1	BY-LAWS OF THE CHINESE TAIPEI APEC ENGINEER MONITORING COMMITTEE .....	27
ATTACHMENT 2	INSTITUTE OF ENGINEERING EDUCATION TAIWAN (IEET).....	31
ATTACHMENT 3	PROFESSIONAL QUALIFICATION EXAMINATION HELD BY THE EXAMINATION YUAN .....	37
ATTACHMENT 4	ASSESSMENT CRITERIA OF PRACTICAL EXPERIENCE.....	42
ATTACHMENT 5	CRITERIA OF CONTINUING PROFESSIONAL DEVELOPMENT.....	48
ATTACHMENT 6	CODES OF ETHICS FOR CHINESE TAIPEI APEC ENGINEERS .....	55
ATTACHMENT 7	APPLICATION GUIDELINES.....	57
<b>APPLICATION FORMS</b>	<b>.....</b>	<b>67</b>
FORM 1:	COVERING LETTER FOR APPLICATION SUBMITTAL .....	68
FORM 2:	PERSONAL INFORMATION .....	69
FORM 3:	SEVEN (7) YEARS OF GENERAL ENGINEERING EXPERIENCE REPORT.....	70
FORM 4:	TWO (2) YEARS OF SIGNIFICANT EXPERIENCE .....	71
FORM 5:	THREE (3) ELECTIVE EXPERIENCE CLAIMED.....	72
FORM 6:	SUMMARY OF CPD ACTIVITIES CLAIMED .....	73
FORM 7:	CODES OF ETHICS FOR CHINESE TAIPEI APEC ENGINEER.....	74

**APEC ENGINEER  
ASSESSMENT STATEMENT**

**Proposed by  
CHINESE TAIPEI**

**Submitted on June 10 2005**

**First Revised in June 2007**

**PREFACE (Rev. 1)**

The intent of the APEC Engineer Register is to recognize the equivalencies in the qualifications and experience of practicing professional engineers in the participating economies and to facilitate the mobility for cross border practice of qualified engineers among participating economies.

The APEC Engineer Coordinating Committee will approve and monitor the operation of the APEC Engineer Registration undertaken by each of Monitoring Committees of participating economy.

**(Delete In this context, the Chinese Taipei Economy (the Chinese Taipei) intends earnestly to apply for participation in the APEC Engineer Register.)**

Following the stipulations of the APEC Engineer Manual, the Central Government Agency (the Government) of the Chinese Taipei in charge of issuing professional licenses **and registrations**, and the Chinese Institute of Engineers (the CIE) have jointly appointed committee members for establishing the Chinese Taipei APEC Engineer Monitoring Committee (the **Committee**). These members are representatives from engineering institutes and associations, universities, relevant industries and the Government agencies concerned.

The **Committee** **was established on March 24 2005** under the CIE, and authorized by the Government as a sole non-governmental body to undertake the assessment and registration of APEC Engineers within the Chinese

Taipei in accordance with the APEC Engineer Manual.

The disciplines of the APEC Engineers covered under this Assessment Statement for application at this time are limited to Civil, Structural and Geotechnical Engineering. Other disciplines would be further applied to in due course, when necessary. Most of this proposal is in generic terms applicable to all disciplines of APEC Engineer. However, the specific processes of assessment for each of the aforesaid 3 disciplines are also given in the Statement, when required.

In light of the above, the **Committee** had submitted the initial Assessment Statement for review and acceptance by the APEC Engineer Coordinating Committee at the Fifth APEC Engineer Coordinating Committee Meeting on June 17 2005. Now the **Committee** has prepared and is submitting herewith this **First Revision of** Assessment Statement according to the APEC Engineer Assessment Submission Guide (Part 2 of The APEC Engineer Manual) for review and acceptance by the APEC Engineer Coordinating Committee.

The **Committee** also intends to review the Statement from time to time as the situation may warrant under assistance and guidance of the Coordinating Committee.

## **PART A CHINESE TAIPEI APEC ENGINEER MONITORING COMMITTEE**

### **A.1 Main Tasks of the Committee**

**The Committee will conduct the following activities related to:**

- **The APEC Engineer Coordinating Committee:**  
An international body comprises one voting member each from the Monitoring Committees, and others, to develop and maintain an authoritative Register of APEC Engineers and to promote acceptance of the APEC Engineer<sup>1</sup>.
- **The Assessment and Registration of APEC Engineers within the Chinese Taipei;**  
APEC Engineers within the Chinese Taipei recognize that the responsibilities of engineers often progress during their career, reflecting an increasing emphasis on management roles, and causing practitioners to engage in continuing professional development activities relevant to practice. Registration indicates maintained competence in professional practice.
- **The Mutual Exemption Agreement of APEC Engineers;**  
APEC Engineers will be expected to practice in other member economies, if the mutual Exemption Agreements are concluded with such member economies.
- **The APEC Engineers Mutual Recognition and Implementation.**  
Participation in the APEC Engineer Register promotes the substantial equivalence in competence of all APEC Engineers. The **Committee** advances to operate in matters related to the Mutual Exemption Framework developed by the APEC Engineer Coordinating Committee

---

<sup>1</sup> Definition in the APEC Engineer Manual

## A.2 Members of the Committee (Rev. 1)

The **Committee** comprises of a total of **19** members as listed hereafter, who are all appointed jointly by the Government and the CIE from engineering associations and institutes, universities and government agencies concerned.

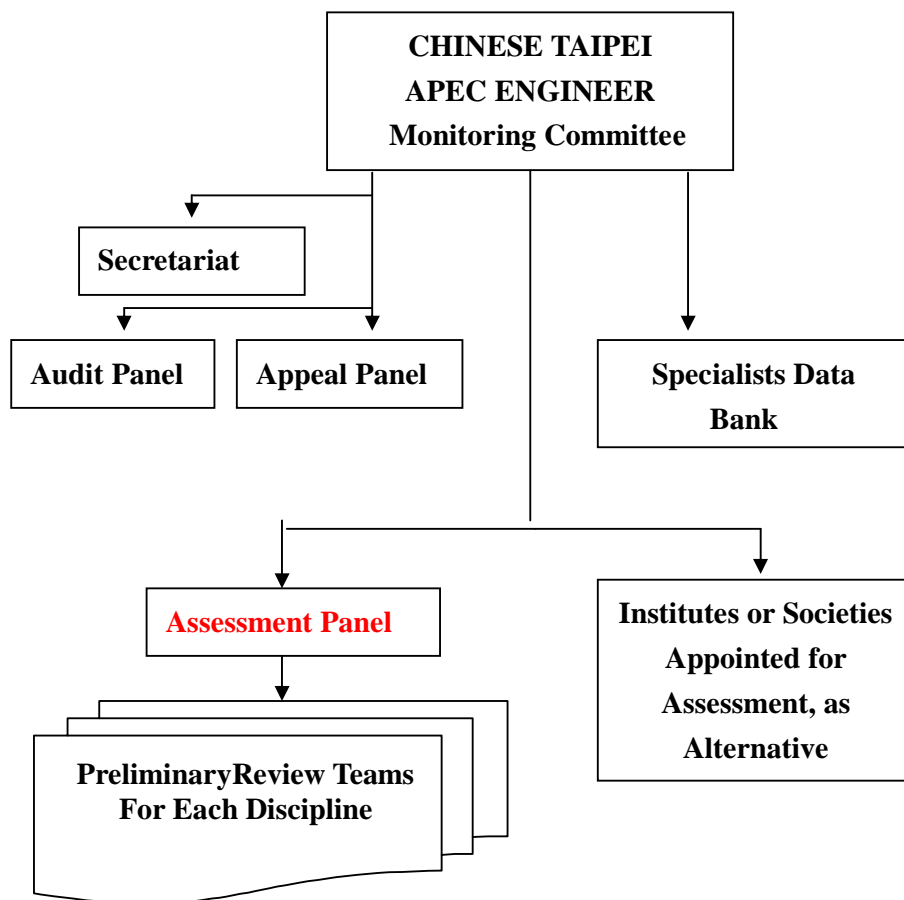
No.	Duty	Name	Organization
1	Chairman	Za-Chieh Moh	President, MAA Group Consulting Engineers
2	Supervisor	Sen-Tang Chen	Vice Chairman, Public Construction Commission
3	Vice Chairman	Jenn-Chuan Chern	Professor, National Taiwan University
4	Vice Chairman	Yao-Chung Chiang	President, Chinese Institute of Engineers
5	Member	Li-Chi Yang	Director, Planning Department, Public Construction Commission
6	Member	Frank C. Lee	Assistant Director General, Ministry of Foreign Affairs
7	Member	Jow-Fei Ho	Director, Department of Higher Education, Ministry of Education
8	Member	Kuang-Chi Lin	Director, Department of Examination Planning, Ministry of Examination
9	Member	Cheng-Han Chen	Chief Engineer, Construction and Planning Agency, Ministry of Interior
10	Member	Chi-Shou Hsieh	Chairman, GIBSIN Engineers, Ltd.
11	Member	James L. Yu	President, Chinese Union of Professional Civil Engineer Associations

<b>12</b>	<b>Member</b>	<b>Chun-Hao Chen</b>	<b>Member, Professional Structural Engineer Society of Republic of China</b>
<b>13</b>	<b>Member</b>	<b>Ming-Tang Kao</b>	<b>Member, Chinese National Association of General Contractors</b>
<b>14</b>	<b>Member</b>	<b>Jui-Tang Liao</b>	<b>President, Taiwan Professional Geotechnical Engineers Association</b>
<b>15</b>	<b>Member</b>	<b>Chin-Der Ou</b>	<b>Chairman, Taiwan Construction Research Institute</b>
<b>16</b>	<b>Member</b>	<b>John Chien-Chung Li</b>	<b>Dean, Engineering College, National Central University,</b>
<b>17</b>	<b>Member</b>	<b>Teh-Chang Lee</b>	<b>Associate Professor, National Taiwan University of Science and Technology</b>
<b>18</b>	<b>Member</b>	<b>Yeong-Bin Yang</b>	<b>Professor, National Taiwan University</b>
<b>19</b>	<b>Member</b>	<b>John T. Yu</b>	<b>Chairman, CTCI Corporation</b>

Updated in May 2007

### A.3 Organization of Chinese Taipei APEC Engineer Monitoring Committee (Rev. 1)

The overall organization structure of the Monitoring Committee of Chinese Taipei is shown in Fig. 1 below. For operational mechanism of the **Committee**, please refer to **Attachment 1, By-laws of Chinese Taipei Monitoring Committee**:



**Fig.1 Organization Chart of Chinese Taipei APEC Engineer Monitoring Committee (Rev. 1)**

#### A.4 Operation

The Government has authorized the **Committee** as a sole non-government body for exclusively handling all matters regarding to APEC Engineers. Furthermore, the operation of the **Committee** is also entitled to be independent of the Government and the CIE, only subject to monitoring of the APEC Engineer Coordinating Committee in the manner stipulated in the APEC Engineer Manual.

#### A.5 Establishment of Assessment Panels and Preliminary Review Teams (Rev. 1)

The Assessment Panel is composed of seven (7) to eleven (11) members. Both the Appeal Panel and Audit Panel are composed of three (3) to five (5) members. Members of aforesaid panels who will be appointed by the Committee from the Specialists Data Bank have a two-year term.

Each of the Preliminary Review Teams (the PRT), (delete or Assessment Panels (the AP)) is composed of three (3) members, who will be appointed by the **Committee** from the Specialists Data Bank according to the need of individual discipline to be assessed.

The Specialists Data Bank will comprise senior professionals, and senior specialists from industry sectors, all with more than 20 years of experience, and full professors with more than five years teaching and research experience. Their data will be respectively enlisted into the Data Bank according to their expertise by categories of disciplines, after being reviewed and accepted through meetings of the **Committee**.

As an alternative, the **Committee** may also entrust the related professional institutions or societies to organize the Assessment Panels for execution of assessment work.

All of (delete the APs and) the PRTs will function on the task-force basis, which will be established or dismissed whenever deemed necessary from time to time.

Office of Chinese Taipei APEC Engineer Monitoring Committee

Address: **3<sup>rd</sup>. Fl., 1, Jen-Ai Rd., Sec.2, Taipei, Taiwan 100, R. O. C**

Tel: **886-2-23925128**

Fax: **886-2-23973003**

Email: [apecengineer@cie.org.tw](mailto:apecengineer@cie.org.tw)

Web-site: <http://www.apecengineer.org.tw>

Contact Person: Mr. Ter-Chyuan Yu, Executive Secretary

Tel: 886-2-23926325

Fax:886-2-23964260

## **PART B ASSESSMENT MECHANISMS**

The Assessment Mechanism proposed by the **Committee** in the following paragraph is of a generic nature applicable to all engineering disciplines. As the assessment under consideration at present is intended for Civil, Structural, and Geotechnical engineering disciplines, a specific assessment mechanism required for each of such disciplines is also given in this Statement, where required.

### **B.1 Recognition of Higher Engineering Education Programs**

#### **(I) Requirements stipulated in the Manual**

According to the APEC Engineer Manual, in order to be listed on an APEC Engineer Register, applicants must demonstrate to the **Committee** a level of academic achievement at, or following, completion of formal education substantially equivalent to that associated with successful completion of the education assessment mechanisms. Five options as described below are provided for consideration:

1. An engineering degree delivered and accredited in accordance with the best practice guidelines developed by the Federation of Engineering Institutions of South East Asia and the Pacific; or
2. An engineering degree accredited by an organization holding full membership of, and operating in accordance with the terms of, the Washington Accord; or
3. The 1st Step Examination of the Professional Engineer Examination set by the Japan Consulting Engineers Association; or
4. The combined Fundamentals of Engineering and Principles and Practices of Engineering Examinations set by the United States National Council of Examiners in Engineering and Surveying; or
5. An engineering program accredited by a body independent of the education provider, or an examination set by an authorized body within an economy, provided that the accreditation criteria and procedures, or the examination standards, as appropriate, have been submitted by one or more monitoring committees to, and endorsed by, the APEC Engineer Coordinating Committee.

It is noted that the final option (No.5 listed above) is designed to be an open-ended mechanism, allowing alternative procedures and criteria to be submitted by a monitoring committee for evaluation and acceptance of the Coordinating Committee.

**It is the intention of the Chinese Taipei to apply No.5 Option listed above for education accreditation for applicants completing their education within, or outside territory of the Chinese Taipei.**

## (II) Education System of the Chinese Taipei

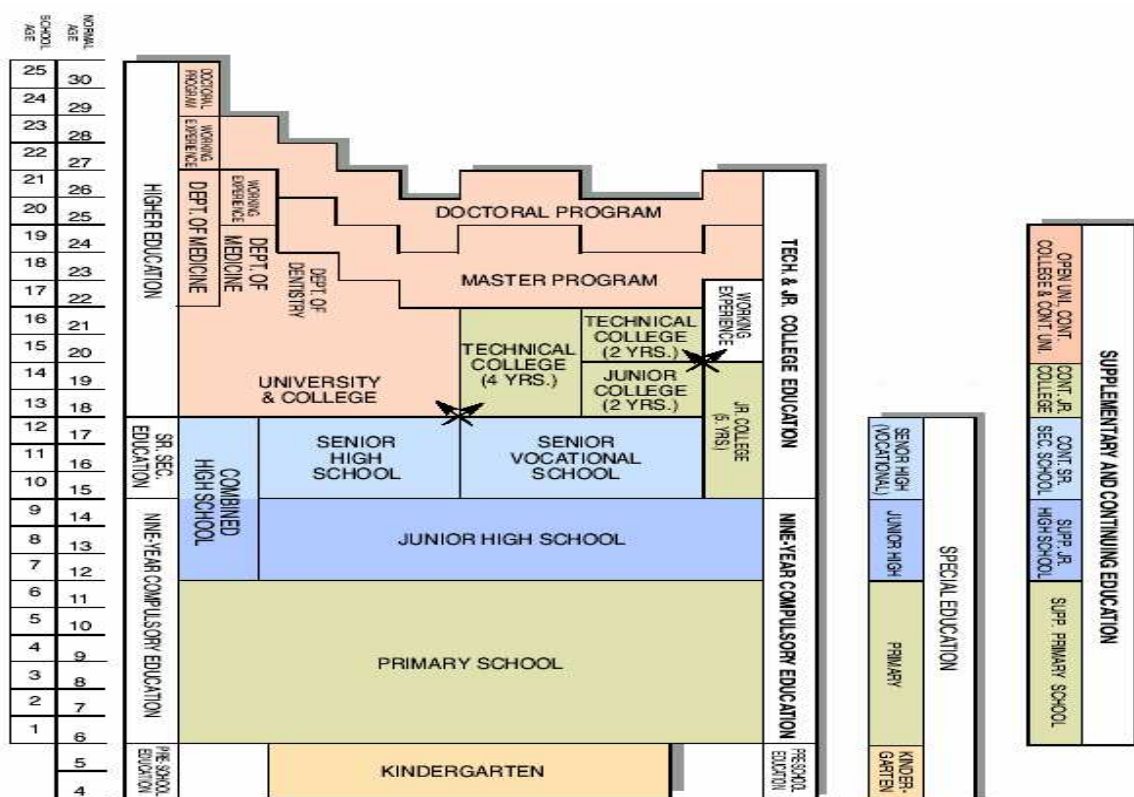


Fig. 2 Current Education System of the Chinese Taipei

The main structure of current educational system of the Chinese Taipei is shown in Fig. 2.

From the above Figure, it is noted that the main skeleton of education

system in the Chinese Taipei comprises kindergarten; 9-year compulsory education (i.e. 6-year primary plus 3-year junior high school); then 3-year senior high school or 3-year senior vocational school; and finally higher education, including both universities and colleges for conferring Bachelor degree, and graduate schools for conferring Master's, and Doctoral degrees.

### **(III) Higher Education System of the Chinese Taipei**

After completing the 9-year compulsory program and additional 3-year high school education, most of the students in the Chinese Taipei join and pass very competitive selective examination, called “The National Joint Entrance Examination of Universities and Colleges” for seeking opportunities to pursue higher education studies.

Especially for entering national universities, the competition is very severe and fierce due to their very limited acceptance capacities. Only limited top several percentage of students from each high school can be admitted for entering into the national universities in the Chinese Taipei. Furthermore, teaching and researching faculties in national universities are all famous and renowned professors in the Chinese Taipei.

The higher education system provided in most universities in the Chinese Taipei have generally two semesters per academic year and their curricula, classification of required and elective courses and counting of credit hours are almost same as those prevailing in most universities elsewhere, including the United States, Canada, etc. The credit hours are generally counted based on the number of class hours attended per week; 18 to 20 weeks per semester; two semesters per each academic year; and a total of four academic years study is required in universities in the Chinese Taipei.

### **(IV) Proposed Accreditation Mechanism for Higher Education System of the Chinese Taipei (Rev. 1)**

“**Institute of Engineering Education Taiwan (IEET)**” was established in **June 2003** for performing engineering education accreditation. **By 2007, IEET has accredited 88 programs in 28 universities.**

The **IEET** is very familiar with and well aware of the recent international trend of engineering education accreditation processes, and has, to the extent feasible, adopted for their accreditation work with the criteria, codes, rules and procedures, which are similar to, or now widely used by many similar international organizations, such as member organizations of the Washington Accord. For more details of the **IEET**, please refer to Attachment 2.

Within **IEET** organization, the Accreditation Council (the AC) has been established with the main objectives to examine whether or not the accredited engineering education programs can provide the students to acquire competencies as listed below (For more details, Please refer to Accreditation Criteria 2004, **IEET**, available from their Website: <http://www.ieet.org.tw>):

- Ability to apply knowledge of mathematics, science, and engineering;
- Ability to design and conduct experiments, as well as to analyze and interpret data;
- Ability to use techniques, skills, and tools necessary for engineering practice;
- Ability to design an engineering system, component or process;
- Ability to communicate effectively and **to function in a team**;
- Ability to identify, formulate, and solve engineering problems;
- Knowledge of contemporary issues and an understanding of the impact of engineering technologies in an environmental, social and global context; and **the ability to cultivate habits of life-long learning**;
- Understanding of professional, ethical, and social responsibilities.

For the purpose of achieving the aforesaid objectives, the accreditation criteria adopted by the AC cover a very wide spectrum of elements to be accredited, including:

(1) Education program objectives and criteria; (2) Elective curricula and learning process of students; (3) Program outcomes with knowledge or capabilities which students acquired, and their assessment methods; (4) Professional components, covering basic sciences, engineering, and education courses; (5) Faculty including faculty-student interaction, and interactions with industrial and professional societies; (6) Hardware and software facilities supporting

research and teaching; and (7) Institutional supports and financial resources, covering quality of programs integrated with its long-term objectives, and availabilities of accounting, personnel, administration, and other types of support.

The outcomes of the evaluation are and classified by the **IEET** into four (4) categories, as prescribed in Attachment 2 enclosed hereafter.

The **IEET** is a private, **non-profit** organization independent from the education provider; and **it has more than 3 years of experience in accreditation of engineering education.**

**(V) Criteria of the Chinese Taipei**

As for the accreditation of education system in the Chinese Taipei, the **Committee adopts** the following criteria for meeting the requirements stipulated under Item (I) of this Section:

An applicant shall be deemed acceptable;

**(i) If he/she has successfully completed his/her higher education program and obtained degree from a school outside the Chinese Taipei, whose education programs have duly met any one of the requirements stipulated in the Manual of APEC Engineer as shown under Item (I) of this Section; or**

**(ii) If he/she has successfully completed his/her higher education program and obtained degree from a school in the Chinese Taipei, whose education programs have been duly accredited by the IEET (Meeting No. 5 Option stipulated under Item (I) of this Section); or**

**(iii) If he/she had successfully completed his/her higher education program and obtained degree from a school before 1998 (inclusive), which was established and had been operated by the Government of the Chinese Taipei as a “national” university or college.**

**(V1) Proposed Revision 1**  
**Alternative Assessment Criteria**

**(i) An applicant shall be deemed acceptable, if he/she had successfully completed his/her higher engineering education program and obtained degree from one of the three private universities, namely, Chung Yuan Christian University, Tamkang University, or Feng Chia University, which was established and recognized by the Ministry of Education of Chinese Taipei**

(Notes: students entering these universities must pass the same unified entrance examination as those entering the national universities. Civil Engineering program in these universities were accredited by the IEET in 2005 and 2006).

**(ii) Applicants who do not possess an engineering degree shall be deemed acceptable, if he/she had obtained a diploma in engineering plus a post graduate degree (Master's or Higher degree) from a school which meets the requirements of either one of the five options listed in the APEC Engineer Manual or the approved Criteria of the Chinese Taipei.**

(Notes: Graduate schools normally require entrant students to take additional make-up courses if he/she did not possess a recognized undergraduate degree.)

**B.2 Assessment Mechanism for Independent Practice**

**(I) Qualification and Requirements Essential for Independent Practice in the Chinese Taipei**

According to the local law, professionals in the Chinese Taipei shall have the following qualification and meet the following requirements so as to be eligible for independent practice.

- (i) Passing the Professional Qualification Examination as described in detail in Attachment 3, Professional Qualification Examination held by the Examination Yuan for obtaining the qualification of a professional, and
- (ii) Having at least two-year actual engineering experience with competent documental evidence, which shall be submitted for review and acceptance by the Government for: (a) obtaining the Practicing License for working in consulting firms, or running their own design offices; or alternatively, (b) registered as Principal Engineers working with construction companies.

The Ministry of Examination is not education provider, and holds the aforesaid Examination once a year. The participants sitting for the Examination are limited to the graduates of faculties of engineering or universities, who have successfully completed certain minimum required courses in their applied disciplines, as prescribed by the Ministry of Examination. Please refer Attachment 3 for details.

## **(II) Registration and Practicing Status of Local Professional Engineers**

The law has been strictly enforced over past several decades for qualifying professionals and for issuing practice licenses, or for registered as Principal Engineers. Therefore, the average passing rates of these Qualification Examinations over last 21 years are respectively 10.9 % for civil engineers; 12.8 % for structural engineers; and 21.2 % for geotechnical engineers (over the past 14 years).

The official statistics shows further that as of the end of 2003, the total number of professional engineers registered with government is 7,844 for civil engineers; 1,079 for structural engineers and 532 for geotechnical engineers. Among them, those who are now actually practicing are about 50 % of its total for civil engineers; 56 % for structural engineers; and 41 % for geotechnical engineers. The rest of those professionals, who are not in practice, are considered to

work in other businesses, or in the government service, or to study or work abroad.

**Local professionals eligible for independent practice can be accurately defined and identified in the Chinese Taipei.**

**B.3 Assessment on Competency of Practical Experience**

For evaluation of practical experience of applicants, the applicants under consideration shall be examined for whether they have practiced in broad areas of engineering theory application, management, communication and social implications of engineering, and whether their practicing have been carried out in competent, independent, and ethical manner. Furthermore, the **Committee** shall also evaluate whether they have, through practice, acquired professional skills and sound engineering judgment in addition to their educational qualifications.

For demonstrating their competency of engineering experience, applicants shall prepare segments of narrative description to fill out in the Application Forms enclosed hereunder. Each of the narrative segments is defined as an Experience Unit describing their actual experiences for supporting the competency claimed by the applicants. The Experience Units are classified into the Compulsory Units and the Elective Units, subject to respective assessment by the **Committee** as stipulated below.

For assessment of each of Compulsory Units and the Elective Units, the criteria for acceptable competent levels have been indicated in terms of “Observable” or “Qualitative Performance” with its corresponding code number assigned as shown in Tables 1 and 2 enclosed in Attachment 4 below.

Based on these performance levels, the practice experience submitted and claimed by the applicants shall be assessed for determination of acceptance or rejection.

## **(I) Assessment on Compulsory Units**

Table 1 listed in Attachment 4 specifies the following two Compulsory Units, which must be all addressed by the applicants; otherwise the application documents shall be deemed incomplete and rejected.

■ A minimum of 7- year experiences after graduated from university (Using Application Form 3 enclosed hereunder); and

■ At least 2 years out of 7-year experiences, being responsible of significant engineering works, among which one Unit of competent levels shall be selected and claimed by the applicant for application (Using Application Form 4 enclosed hereunder).

## **(II) Assessment on Elective Units**

Table 2 listed in Attachment 4 specifies the following 6 different engineering fields, and against each of which, multiple Experience Units with acceptable performance levels are indicated. The applicant shall, at least, select 3 Units from those Units (From different engineering fields) in connection with his/her 7-year working experiences for supporting expertise he/she claimed (Using Application Form 5 enclosed hereunder).

- Planning or Design
- Project Management or Construction Supervision
- Contribution to Engineering Practice
- Research and Development
- Contribution to Public Work Sector
- Promotion of Engineering Profession

In case less than 3 Experience Units are selected and submitted, such an application document is deemed insufficient, and shall be rejected. If more than 3 Experience Units are submitted, the **Committee** shall pick up any 3 Units for assessment.

The Preliminary Review Team (the PRT) shall read carefully and

analyze in depth the above-submitted application documents. During this initial paper review, the following points of an applicant related with his/her practice shall be specifically examined by the PRT: (i) Personal contribution and responsibilities; (ii) The problems faced; (iii) The solution found; (iv) The engineering judgments made; and (v) Impact generated by such solution and judgments. Based on the information, the PRT shall formulate strategy of, and prepared questions for applicant in the Interview stipulated below.

### **(III) Interview (Rev. 1)**

Only those whose submitted documents have passed the preliminary assessment, shall be notified to attend the Interview, which shall be conducted by the PRT for a total of about one hour **(delete and half hours)** for each applicant.

The first 20 minutes of the Interview is allocated to the applicant for making the uninterrupted presentation of his claimed expertise and his related experience, and then followed by questions raised by the PRT and answered by the applicant. During the Interview, the PRT shall listen to and evaluate the presentation made, and shall assess instant responses made by the applicant against questions raised.

For the details, please refer to Attachment 4 Assessment Criteria of Practical Experience enclosed hereunder.

**The applicants shall be deemed professionally competent, if their practice performance demonstrated in Application Forms, 3, 4, 5 enclosed hereunder meets satisfactorily the competent levels as specified and evaluated, and their presentation, their proficiency in English, as well as their instant responses made against the questions raised during the Interview session are all acceptable.**

### **B.4 Continuing Professional Development (Rev. 1)**

Continuing professional development (CPD) is required for all APEC

Engineers as stipulated in the Manual of APEC Engineer.

The continuing professional training activities will be classified, according to different sponsors, into Categories I, II, and III. The Category I of the training activities is sponsored, entrusted, authorized or recognized by the Government in charge of control and administration of local professionals. The Category II of the training activities is sponsored by the **Committee**. The Category III of the training activities is sponsored by agencies other than the aforesaid two agencies.

The CPD activities participated by the applicant shall be carefully assessed by the PRT to examine whether their substantial quality of the contents are in the line with the levels intended and acceptable or not.

An evaluation of such CPD credit-hours (CH) shall be carried out by the **Committee** according to the Tables attached hereunder.

**(1) For Application for an APEC Engineer:**

Within two years prior to the date for submittal of the first application, the total credit-hours of CPD required for each of applicants shall be not less than 50, in which the credit-hours belonging to Category I shall not be less than 15.

**(2) For Renewal of Registry of APEC Engineer:**

For every 4 years of the renewal of registry, the total CPD credit-hours required for each applicant shall not be less than 200, in which belonging to Categories I and II shall not be less than 60 and 40 respectively.

Count of the CH shall be carried out by the PRT strictly in accordance with the requirements indicated in Attachment 5 (**Rev. 1**) Criteria of Continuing Professional Development enclosed hereunder. Please refer to Attachment for details.

**The Chinese Taipei shall strictly follow the Attachment 5, prescribing the requirements for the CPD of APEC Engineer for registering or renewal registering with the**

## **Committee.**

### **B.5 Codes of Conduct**

All applicants seeking registration for APEC Engineer in the Chinese Taipei shall agree to be bound by “the Codes of Ethics for Chinese Taipei APEC Engineer (the Codes)” prepared by the **Committee** as indicated in Attachment 6 enclosed hereunder. Engineers seeking admittance to the APEC Engineer Registry are required to admit, as shown in the statements incorporated into the Covering Letter of Application Submittal (See Attachment 1), that they will fully observe and be bound by the Codes, and that they have an obligation to inform the **Committee** of any matter that may affect their fitness for registration.

A reaffirmation shall be required at each renewal of the registration, after the initial registration. A suspension or revocation of one’s license to engineering practice may constitute just cause for removal from the APEC Engineer Registration.

**Confirmation of observation by applicant of the Codes of Ethics of Chinese Taipei shall be indicated in the [Self Assessment for Application Submittal](#), and Form 7, both subject to further re-confirmation during the Interview Session.**

### **B.6 Audit of APEC Engineers**

Every APEC Engineer after the registration shall be subjected to random audit of their statements of engineering practice, and records of Continuing Professional Development, etc as described in Attachment 5 enclosed hereunder over the immediate past four-year period. Accordingly, an Auditor Panel will be set up within the **Committee** for this purpose. The **Committee** shall select from the Specialists Data Bank for appointment of the Panelists.

Any registered APEC Engineer shall, if so selected for auditing by the Audit Panel, be promptly responsive to requests made by the Audit Panel, including submittal of clarification statements, or presence at meetings for verbal explanation or clarification regarding the points audited.

At the same time, an Appeal Panel shall be set up in the **Committee** in accordance with the Manual of APEC Engineer for dealing with any complaint or protest made in writing against operation of the **Committee**.

## **PART C ENGINEERING DISCIPLINES**

The **Committee** currently accepts (delete now intends to apply for) assessment of engineers in three disciplines, namely civil, structural, and geotechnical engineering. Other disciplines will be further applied for in due course.

Indicative Scope of Education and Practice covering the examination qualification requirements are all set forth by the Examination Yuan in details (see Attachment 3) for the following engineering:

- Civil Engineering
- Structural Engineering
- Geotechnical Engineering

## **PART D APPLICATION GUIDELINES**

1. All information required and Application Forms to be completed by applicants are compiled in Attachment 7 for helping applicants to complete their application documents. The Guidelines include: **(1) Preface; (2) Definition of APEC Engineer; (3) Qualification required as an APEC Engineer; (4) Documents to be prepared by an Applicant; (5) Assessment Procedure; (6). Registration; (7) Assessment Standards for Renewal of Registration; (8) Audit; (9) Fee Standard; (10) Appeal Panel; (11) Contact Persons.**

The Attachment 7, Application Guidelines ~~was~~ ~~(delete shall be)~~ printed and issued ~~(delete in the future)~~ in a small booklet including all necessary Attachments and Application Forms for use by the prospective applicants. ~~(delete after the Committee is admitted as a member of the APEC Engineer Coordinating Committee. At the same time,)~~ ~~It is~~ ~~(delete will be)~~ also posted on website of the **Committee** ~~(delete available)~~ for local professionals to obtain related information through Internet.

(End of Main Text)

## Attachments

- Attachment 1** By-Laws of Chinese Taipei APEC Engineer Monitoring Committee **(Rev. 1)**
- Attachment 2** Institute of Engineering Education Taiwan (IEET) **(Rev. 1)**
- Attachment 3** Professional Qualification Examination Held by the Examination Yuan
- Attachment 4** Assessment Criteria of Practical Experience **(Rev. 1)**
- Attachment 5** Criteria of Continuing Professional Development **(Rev. 1)**
- Attachment 6** Codes of Ethics for Chinese Taipei APEC Engineers
- Attachment 7** Application Guidelines **(Rev. 1)**

**Attachment 1 By-laws of the Chinese Taipei APEC Engineer  
Monitoring Committee (Rev. 1)**

- Article 1 Under authorization of the Central Government Agency in charge of the professional engineers (hereinafter referred to as the Government), the Chinese Institute of Engineers (hereinafter referred to as the CIE) has organized and established the Chinese Taipei APEC Engineer Monitoring Committee (hereinafter referred to as the Committee), to act as a sole official representative of Chinese Taipei Economy in charge of all matters relating to APEC Engineer.
- Article 2 The purposes for establishment of the Committee are to develop and maintain register of local APEC Engineers; and to promote mutual recognition of APEC Engineers among the member economies.
- Article 3 The major responsibilities of the Committee as commissioned shall be:
- (1) To conduct local APEC Engineers qualification recognition under the authorization of APEC Engineers Coordinating Committee;
  - (2) To collaborate closely with APEC Engineer Coordinating Committee in managing matters relating to APEC Engineers, and to engage in the operations of the Coordinating Committee, sponsor, co-sponsor and participate meetings or seminars related.
  - (3) To register, issue, renew, audit and control APEC Engineer Registry of local engineers after recognition of their qualification.
  - (4) To assist the Government in expediting sign of bilateral or multi-lateral agreements relating to mutual recognition of APEC Engineers.
  - (5) To register and conduct the practice of foreign APEC Engineers recognized in other economies, according to bilateral or multilateral agreements signed.
  - (6) To maintain contacts with APEC Engineer Monitoring Committees of other economies and exchange with them the

information and materials related to APEC Engineers.

(7) To handle any other business related to APEC Engineers.

Article 4 The office of the Committee shall be located in the office of the CIE. However, the Committee may establish its office in other location, if required for its operations.

Article 5 The operations of the Committee shall be financed from the following sources:

(1) Annual subsidies from the Government;

(2) Donations from private sectors;

(3) Fees and charges collectable through various operations and service.

Article 6 Administration, accounting and financial related operation of the Committee shall be independent from the CIE and shall be subject to yearly joint auditing by Government and private sectors, if they donated. The Committee shall pay to the CIE administrative charges as reasonably determined between the CIE and the Committee.

Article 7 The Committee shall comprise of nine to ~~twenty-one members and one Supervisor~~ ~~(delete fifteen members)~~, who are appointed jointly by the Government and the CIE with qualifications and composition provided below; and who select among ~~the Committee members~~ ~~(delete themselves)~~ the Chairman and two Vice Chairmen ~~(delete and one Supervisor)~~:

(1). Senior professionals and scholars from related disciplines within the Economy of Chinese Taipei to comprise no less than two thirds of the total Committee membership, and one half of whom shall be professional engineers.

(2). Members of the related officials designated by the Government.

The tenure of the Chairman, Vice Chairmen and Supervisor is two (2) years, which may be subject to succeeding extension, as long as they are so elected.

Except for one half of the first term of the Committee members whose tenure shall be two (2) years, the tenure of all other

Committee members shall be four (4) years, and subject to succeeding extension as long as they are so appointed.

The tenure of Committee members appointed by the Government in accordance with (2) of this Article shall be subject to the same tenure of their working at the office of the Government.

The Chairman, Vice Chairmen, Supervisor and all other members of the Committee shall be unpaid for their service in the Committee.

Article 8 Regular meetings of the Committee shall be held at every three months with the Chairman convening and presiding at the meetings.

The Chairman may convene special meetings, when deemed necessary or requested by a minimum of two thirds of the Committee members.

Article 9 Resolutions of the Committee Meeting shall be effective with a minimum of one half of the Committee members present and voted affirmative by a minimum of two thirds of the attendance. However, for matters relating to the following important issues, the resolution shall be effective with a minimum of two thirds of the Committee members present and voted affirmative by a minimum of three quarters of the attendance:

(1). Amendment of the By-laws.

(2). Change of the purpose for establishment of the Committee or dissolution of the Committee.

Article 10 For **assessment** operation regarding to APEC Engineers, the Committee may establish **an Assessment Panel**, an Appeal Panel, an Audit Panel, and a Specialists Data Bank; and against each of APEC Engineer disciplines, **(delete Assessment Panels and)** Preliminary Review Teams may also be formed from time to time on a task-force basis. **The regulations for the establishment of such panels, teams as well as Specialist Data Bank shall be separately determined by this Committee. (delete Number and candidates of such panelists shall be proposed by the Chairman and subject to approval of the Committee before**

establishment.)

- Article 11 The Committee shall have one Executive Secretary and one Deputy Executive Secretary, whose engagement and disengagement shall be proposed by the Chairman and subject to the approval of the Committee. The Executive Secretary shall manage all of the Committee matters (delete handle finance, accounting and general affairs of the Committee) under direction of the Chairman. To handle financing, accounting and general affairs of the Committee, an Administrative Team may be formed and its regulations shall be separately determined.
- Article 12 If required by operations, the Committee may hire full-time or part-time advisers, accountants and general staff as proposed by the Executive Secretary and approved by the Chairman.
- Article 13 Should it be affected by international situation, or should the purposes for which the Committee was established no longer exist, the Committee may be dissolved subject to the approval of the CIE and the Government. The remaining properties of the Committee as a result of dissolution shall belong to CIE.
- Article 14 Any amendments to these By-laws shall be subject to the adoption of the Committee and shall become effective upon approval by both CIE and Government.

## **Attachment 2 Institute of Engineering Education Taiwan (IEET)** **(Rev. 1)**

The following sections present a brief description of the Institute of Engineering Education Taiwan (IEET), the independent organization for accreditation of engineering and technology programs in Chinese Taipei. For details, refer to website <http://www.ieet.org.tw>

### **A. Particulars of Institute of Engineering Education Taiwan (IEET)**

#### **1. Establishment of the IEET**

- a. Date of establishment: 21 June 2003
- b. Main Office: Room 202, 130 Keelung Road, Sec. 3, Taipei 106, Taiwan, R.O.C.
- c. Telephone: +886 2-2367-9506
- d. Facsimile: **+886 2-2367-9452**
- e. Website: <http://www.ieet.org.tw>
- f. Contact persons:  
    President  
    Secretary General

#### **2. Organization of the IEET**

##### **a. Purpose for establishment**

The IEET is established as a non-profit and non-government organization for the purposes of conducting research and promoting engineering and technology education programs; cultivating professionals; rendering services to the society; and enhancing economic development of the country.

In September 2003, the Ministry of Education of Chinese Taipei formerly chartered IEET as the sole window for contact in issues related to accreditation of engineering and technology education programs.

##### **b. Mission of IEET**

- (1) Conducting research, application, evaluation, accreditation and promotion of Engineering Education;
- (2) Training engineering education personnel;
- (3) Providing consultation and recommendations pertaining to engineering and technology;
- (4) Providing consultation and recommendations pertaining to

- human resource of engineering and technology;
- (5) Cooperating with engineering education organizations; and
- (6) Any other related activities.

c. Membership

Membership of IEET includes the followings:

- (1) Individual members engaged or interested in engineering education.
- (2) Industry representatives.
- (3) Honorary members as **nominated** by members due to their contribution to engineering education; and
- (4) Supporting members providing supports to the IEET.

d. Board of Directors

- (1) Twenty-one Directors and five Supervisors elected by members, each serving for two-year term without any compensation, and eligible for successive terms if re-elected.
- (2) Five Standing Directors with one as the President, elected by the Directors.
- (3) One Secretary General and 1~3 **Deputy** Secretary General appointed by the Board, working under the direction of the President.

e. Committees

Figure 2-1 shows the organization structure of the IEET. IEET may establish various committees, task forces or other operation teams according to the by-laws.

The most important unit of the IEET is the Accreditation Council which is responsible for carrying out independent accreditation of engineering and technology programs.

f. Meetings

- (1) Regular general meetings are held annually, with special meetings convened, whenever deemed necessary.
- (2) Majority rule generally applied for the meeting resolutions, and for important resolution requiring consensus of at least two-thirds of the attending members.

g. Fund and Accounting

The source of revenue for IEET shall be from:

- 1. Member admission fee;

2. Annual dues;
3. **Accreditation** fees;
4. Donations;
5. **Government project funds**
6. Fund and interests; and
7. Any other incomes.

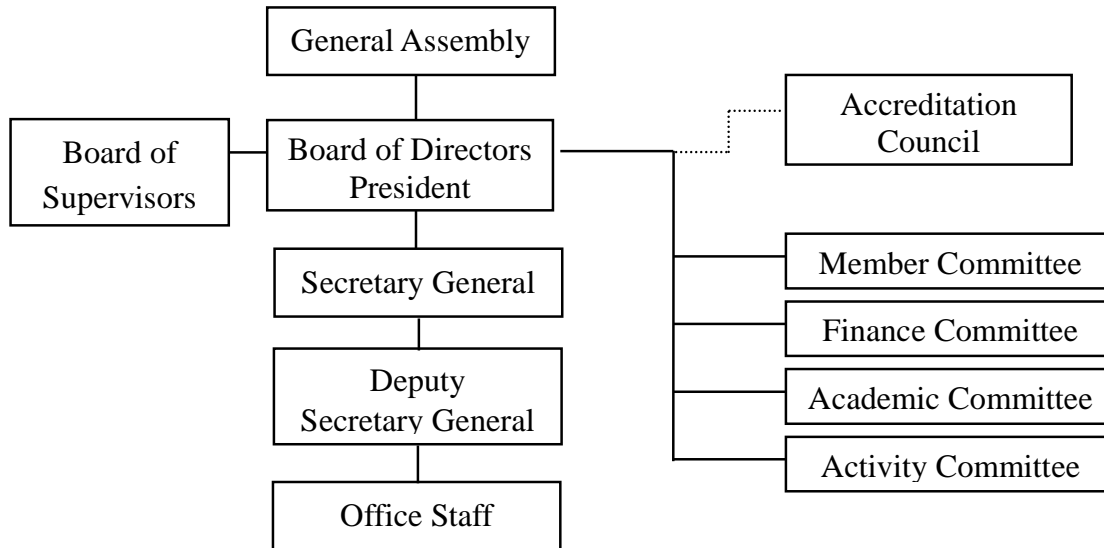


Figure 2-1 Organizational Structure of the IEET

## B. Accreditation Council (AC)

1. According to the by-laws of the IEET, the Accreditation Council (the AC) was established within the IEET responsible for overall planning, setting criteria and procedures and administrating accreditation of engineering and technology education programs.
2. Membership of the AC consists of a Chairman, two Vice Chairmen and 12 to 22 members, all appointed by the Board of the IEET. It is stipulated that at least one-third (1/3) of the Council members (including the Chairman and Vice Chairmen) should be from the engineering and technology industry.
3. Although the members of the AC are appointed by the Board of Directors of the IEET, the AC operates independently.
4. There are three operational units under the AC as shown in Fig. 2.2. The Engineering Accreditation Commission (EAC) is responsible for

formulating accreditation criteria and procedures and executing the accreditation processes. The Appeal and Review Committee (ARC) is responsible for reviewing appeals from Programs not accredited, and the Office of the Executive Director (OED) is responsible for administrating the accreditation and related affairs.

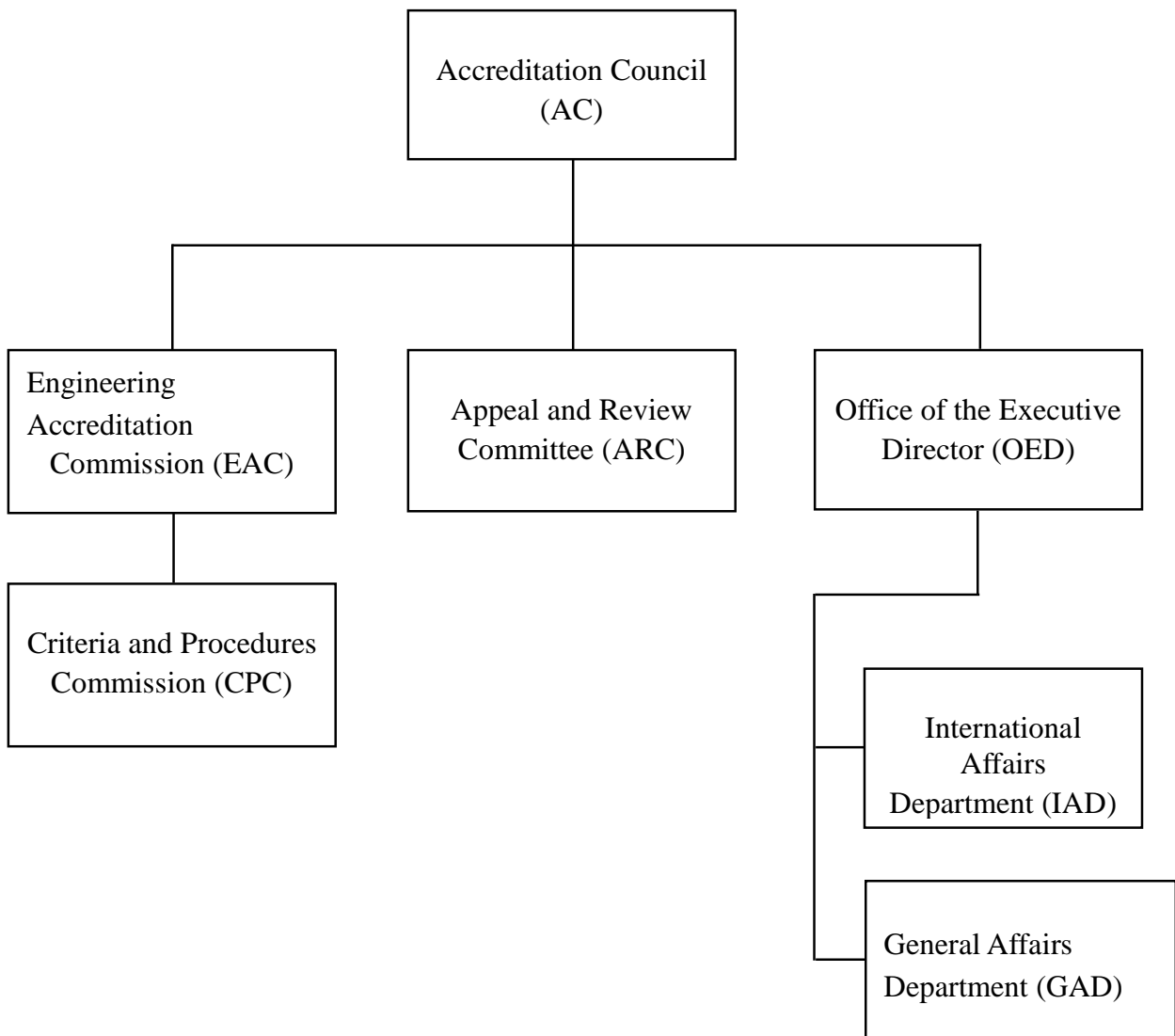


Fig. 2.2 Organizational Structure of the Accredited Council of IEET

### C. Accreditation Objectives and Criteria

The main objective of the AC to perform accreditation is to examine whether the engineering education programs under review can provide the students with the environment to acquire skill, knowledge, and competencies as listed below:

- an ability to apply knowledge of mathematics, science, and engineering;
- an ability to design and conduct experiments, as well as to analyze and interpret data;
- an ability to use techniques, skills, and tools necessary for engineering practice;
- an ability to design an engineering system, component or process;
- an ability to communicate effectively **and function in a team**;
- an ability to identify, formulate, and solve engineering problems;
- a knowledge of contemporary issues and an understanding of the impact of engineering technologies in an environmental, social and global context; and **the ability to cultivate habits of life-long learning**;
- an understanding of professional, ethical, and social responsibilities.

For the purpose of achieving the aforesaid objectives, the accreditation criteria adopted by the AC cover a very wide spectrum of elements, including;

- (1) Education program objectives and criteria, with survey questionnaires, or alumni information as evidence for curricula evaluation;
- (2) Curricula of whether or not with reasonable and enforceable regulations to conform to the policies of the institution, and learning process of students, including those of exchanged students;
- (3) Program outcomes with knowledge or capabilities, which students acquired, and their assessment methods including any mechanism for improvement to be regarded as an outcome;
- (4) Professional components, covering basic sciences, engineering, and education courses;
- (5) Faculty including interactions of faculty-student, and of school with industrial, professional practitioners, and societies (associations), academic journals, and conferences;
- (6) Hardware and software facilities supporting research and teaching, and helping students adapt quickly to a professional working environment; and
- (7) Institutional supports and financial resources, covering quality of programs integrated with its long-term objective or not, and availabilities of accounting, personnel, administration, and other types of support.

#### D. Accreditation Procedures

In accordance with the “Policies for Accrediting Engineering Programs” and “Procedures for Accrediting Engineering Programs” established by the Accreditation Council of the IEET, the following summarizes the procedures for accreditation.

1. A program seeking accreditation shall register with the IEET through its affiliated university/college by submitting a Request for Evaluation. Upon acceptance, the Program shall submit a Self-Study Report.
2. An Accreditation Team shall be appointed by the EAC to be responsible for reviewing of the Self-Study Report, conducting On-site Visit, preparing the Evaluation Report and making Accreditation Actions Recommendation. The Accreditation Team shall consists of a Team Chair and **one** to four Program Evaluators.
3. The Accreditation Actions Recommendation **are** subject to the approval of the EAC and endorsed by AC. An Accreditation Actions statement is then issued to the affiliated institution of the program **under review**.
4. There are **six** kinds of accreditation actions namely: “Accredited”, “Conditionally Accredited (Interim visit not required)”, “Conditionally Accredited (Interim visit required)”, **“Provisionally Accredited,”** “Evaluation is continuing”, and “Not to Accredit”.
5. If a program seeking accreditation objects to the “Not to Accredit” action it received, it may appeal to the AC’s Appeal and Review Committee (ARC) in accordance with the “Policy and Procedure for Appeals”.

### **Attachment 3 Professional Qualification Examination Held by the Examination Yuan**

#### **A. Preface**

To be eligible as local Professional Engineers in the Chinese Taipei, applicants shall, by law, participate and pass the Qualification Examination for Professional Engineer, which is conducted by the Ministry of Examination of the Examination Yuan once a year. The participants are generally limited to the graduates of faculties of engineering or universities, who have successfully completed basic science courses: such as general physics, chemistry; general mathematics, calculus; differential equations; etc. In addition, they shall have successfully completed certain minimum required engineering courses in their applied disciplines, as prescribed in the following sections by The Ministry of Examination.

The Ministry of Examination belongs to the Examination Yuan, entirely independent from the Ministry of Education, and is solely in charge of administrating various examinations for qualifying those professionals or public servants prior to registering with or serving in government organizations.

The number of disciplines of the technical professions as of 2005 is 32, among which 25 are directly related to engineering as listed below:

(1) Civil engineer; (2) Hydraulic engineer; (3) Structural engineer; (4) Geotechnical engineer; (5) Survey engineer; (6) Environmental engineer; (7) Urban planning engineer; (8) Mechanical engineer; (9) Refrigeration and air-condition engineer; (10) Naval architectural engineer; (11) Electrical engineer; (12) Electronic engineer; (13) Information processing engineer; (14) Aeronautical engineer; (15) Chemical engineer; (16) Industrial engineer; (17) Industrial safety engineer; (18) Industrial mining hygiene engineer; (19) Spinning engineer; (21) Metallurgical engineer; (24) Forest engineer; (29) Mining engineer; (30) Applied geological engineer; (31) Mining safety engineer; and (32) Traffic engineer.

#### **B. Qualification and Eligibility Required for Candidates for Sitting for**

## **the Examination**

The candidates, who shall be qualified for sitting for the examination, shall hold diplomas in their respective applied disciplines, and shall successfully complete the basic science courses as mentioned in the first paragraph, and at least seven (7) courses required for each discipline as prescribed by the Ministry of Examination.

### **1. Apply for Civil Engineer**

Strength of materials, Structural behaviors (engineering mechanics), or Engineering mechanics; Theory of structures; Surveying; Soil mechanics; Engineering materials, Mechanical materials, Civil engineering materials, or Building structure and materials; Engineering geology; Hydraulic engineering; Transportation engineering; Reinforced concrete engineering, Reinforced concrete construction, Reinforced concrete design, or Behavior of reinforced concrete frames; Pre-stress concrete engineering, Pre-stress concrete design, or Pre-stress concrete construction; Steel structure, Steel structure design, or Steel structure drawing; Foundation engineering; Bridge construction, Bridge design, or Road bridges; Road construction; Coastal and harbor engineering; Tunneling; Construction cost estimates or Constructions and estimates; Construction machinery or Construction estimates and machinery; Building constructions; Coastal engineering; Structural analysis; Structural design; Engineering surveying; Engineering methods or Civil engineering methods; Construction management or Project engineering management; Geotechnical engineering; and Project management, where each subject carries a maximum of three credits for a total of not less than 20 credits, where the subjects studied shall include theory of structures, surveying, soil mechanics, and engineering materials, and where documents of proof can be presented.

### **2. Apply for Structural Engineer**

Strength of materials; Structural behaviors (engineering mechanics) or Engineering mechanics; Theory of structures; Reinforced concrete design, Reinforced concrete engineering, Reinforced concrete or Behavior of reinforced concrete frames; Soil mechanics; Engineering geology; Structural dynamics; Pre-stress concrete design, Pre-stress concrete engineering, or Pre-stress concrete; Steel structure, Steel structure design, or Steel structure drawing; Plastic design of steel structures; Structural design of buildings; Bridge design, Bridge construction, or Road bridges; Foundation engineering; Foundation design; Structural design of special concrete; Matrix structural analysis or advanced structure theories; Earthquake engineering; Chassis design; Finite element method; Design of hydraulic structures; Structural dynamics analysis and Anti-vibration design, where each subject carries a maximum of three credits for a total of not less than 20 credits, where the subjects studied shall include foundation engineering, theory of structures, structural dynamics, and matrix structural analysis, and where documents of proof can be presented.

### **3. Apply for Geotechnical Engineer**

Geotechnical engineering; Soil mechanics; Foundation engineering; Engineering geology; Strength of materials; Reinforced concrete engineering, Reinforced concrete design, Reinforced concrete engineering, or Behavior of reinforced concrete frames; Rock mechanics; Slope engineering and Slope stability; Engineering methods or Civil works; Tunneling; Worksite survey; Soil dynamics; Earthquake engineering; Foundation design and construction; Structural geology; Geophysical prospecting; Highway engineering; Dam engineering; Surveying; Soil and water conservation; Engineering materials; Underground water and seepage; and Ground improvement, where each subject carries a maximum of three credits for a total of not less than 20 credits, where the subjects studied shall include strength of materials,

soil mechanics, foundation engineering, and engineering geology, and where documents of proof can be presented.

### C. Subjects of the Qualification Examination

The Examination Subjects respectively for civil, structural and geotechnical disciplines are indicated in Table 3-1.

**Table 3-1 Subjects Covered in the Professional Qualification Examination**

<b>Disciplines</b>	<b>Subjects</b>
Civil Engineering	<ol style="list-style-type: none"> <li>1. Structural analysis (including mechanics of materials, and structures)</li> <li>2. Structural design (including reinforced concrete design and steel structural design)</li> <li>3. Geotechnical engineering (including soil mechanics, foundation engineering and engineering geology)</li> <li>4. Engineering surveying (including plane surveying and construction surveying)</li> <li>5. Construction methods (including civil engineering, architectural construction methods and engineering materials)</li> <li>6. Construction management</li> </ol>
Structural Engineering	<ol style="list-style-type: none"> <li>1. Mechanics of materials</li> <li>2. Structures</li> <li>3. Reinforced concrete design and pre-stressed concrete design</li> <li>4. Steel structure design and foundation design</li> <li>5. Structural dynamics and earthquake resistance design</li> </ol>
Geotechnical Engineering	<ol style="list-style-type: none"> <li>1. Soil mechanics (including soil dynamics)</li> <li>2. Foundation engineering and design (including excavation engineering and foundation-related</li> </ol>

Disciplines	Subjects
	structural design) 3. Engineering geology and site investigations 4. Landslide engineering (including soil conservation) 5. Rock mechanics and tunnel engineering 6. Geotechnical engineering construction

#### **D. Obtaining Professional Practice Licenses or Registering as Principal Engineers**

After passing the Qualification Examination held by the Ministry of Examination, the successful applicants will obtain Examination Passing Certificates, and then may apply with an evidential document demonstrating to have at least two (2) years of actual practicing experience to the regulatory agency in charge of professional engineers at the central government level for obtaining (i) the Professional Practice License working in consultant or running their own design offices, or as alternative, (ii) registering as Principal Engineers working with construction firms.

After obtaining the Professional Practice License, or registering as Principal Engineers, the applicant will be considered eligible for practice independently.

There is a complete set of laws and regulations strictly governing qualification, registration, practicing and conduct of local professional engineers in the Chinese Taipei, which are available from Websites of the Ministry of Examination ([www.moex.gov.tw](http://www.moex.gov.tw)), and The Public Construction Commission (<http://www.pcc.gov.tw>).

## **Attachment 4 Assessment Criteria of Practical Experience (Rev. 1)**

### **A. Purpose of Assessment**

The purpose for the assessment of practical experience of applicants is to evaluate whether or not they have practiced in broad areas of engineering theory application, management, communication and social implications of engineering and such a practice shall be required to carry out in competent, independent, and ethical manner. Furthermore, they shall also demonstrate in their application documents that they have, through practice, acquired professional skills and sound engineering judgment in addition to their educational qualifications.

### **B. Assessment Criteria and Competent Levels**

For assessment, the applicant shall prepare segments of narrative description of the particular engineering experience he claimed, for inclusion into the application documents for submittal to the Committee. Each of the aforesaid segments of engineering experience is defined as an Experience Unit, which shall be designated either as the Compulsory Units or the Elective Units as required by Application Forms enclosed hereunder.

The competent levels required for each of the Experience Units are specified in terms of “observable” or “qualitative performance” as listed in the following Tables 1 and 2, with its corresponding code number indicated. Based on these performance levels, the practice experience claimed and submitted by the applicants will be assessed and judged for acceptance or rejection.

### **C. Compulsory Units**

Table 4-1 lists specifics of the following two Compulsory Units, which must be all addressed.

- (1) A minimum of 7- year experience after leaving school, and
- (2) At least 2 years out of the 7-year experience, being responsible for significant engineering work, among which one Unit of competent levels shall be selected and claimed by the applicant for application.

**Table 4-1 Requirements for Compulsory Units of Experience**

<b>Minimum Years of Experience</b>	<b>Applied Criteria Code No.</b>	<b>Competent Levels</b>
Years of working experience after graduated from school	C-1-a	Had full 7-years practical experience in related engineering fields since graduation from school by the time of submittal of the application.
At least 2 years out of 7 years in responsible of significant engineering work	At least one of the following Units of the competent level is selected and claimed.	
	C-2-a	Planned, designed, coordinated and executed a small project
	C-2-b	Undertook part of a larger project based on an understanding of the whole project
	C-2-c	Undertook novel, complex and/or multi-disciplinary work

**D. Elective Units**

Table 4-2 lists specifics of the following 6 engineering fields, and against each of which, multiple Units of acceptable performance levels are indicated. The applicant shall, at least, select 3 Units from these Units (Regardless of engineering fields) from his 7-year experience for supporting his/her experience claimed.

- Planning or Design
- Project Management or Construction Supervision
- Contribution to Engineering Practice
- Research and Development
- Contribution to Public Work Sector
- Promotion of Engineering Profession

The experience of applicants shall be deemed professionally competent, and qualified, if the performance of their experience is assessed to meet

the acceptable levels specified in Table 4-2.

**Table 4-2 Requirements of Elective Units of Experience**

<b>Fields Claimed</b>	<b>Code No.</b>	<b>Units of Acceptable Competent Levels</b>
Planning or Design	O-1-a	Performed good planning or design with outcomes and cost estimate meeting requirements of clients
	O-1-b	Developed or adopted effective solutions for resolving technical problems encountered during planning or design
	O-1-c	Selected or adopted sound technical assumptions, data, or parameters for carrying out accurate, competent or cost effective planning or design
	O-1-d	Executed a control process for checking or controlling planning or design, including later design modifications
Project Management or Construction Supervision	O-2-a	Established and performed effective programs at site for controlling the construction qualities intended for the project, and for maintaining effectively the job-site safety
	O-2-b	Identified risks involved in the project construction with associated impacts, and carried out the risk mitigation plan
	O-2-c	Controlled strictly construction schedule, or adopted schedule acceleration measures for avoiding schedule slips
Contribution to Engineering Practice	O-3-a	Developed or applied innovation, new concept, new principles, new codes, standards or practice in engineering practice
	O-3-b	Developed and acquired patent rights for new concept, new methods, and new products during implementation of the project

**Table 4-2 Requirements of Elective Units of Experience** *(continued)*

<b>Fields Claimed</b>	<b>Code No.</b>	<b>Units of Acceptable Competent Levels</b>
Research and Development	O-4-a	Carried out or joined research and development programs sponsored by private or public sectors with outcome applied for upgrade of engineering practice
	O-4-b	Acquired patent right as an outcome of the research and development program
Contribution to Public Work Sectors	O-5-a	Joined public hearings for help develop or establish governmental policies regarding public work
	O-5-b	Advocated on behalf of engineering associations to influence the decisions that have engineering implication
	O-5-c	Served as committee members or task force panelists for government for resolving engineering related problems, assessments, or arguments
Promotion of Engineering Profession	O-6-a	Advocated innovative engineering solutions
	O-6-b	Led and promoted ethical decisions
	O-6-c	Led and managed multi-disciplined team for close cooperation for completion of the work
	O-6-d	Sought or established engineering business opportunities
	O-6-e	Established or operated a larger consulting firms

### **E. Application Forms**

The Application Forms as mentioned hereunder are attached for use by the applicants for completing their application documents.

Applicants shall note the followings, when the Forms are filled out for preparation of their application documents:

1. There are totally three (3) Application Forms required for submittal by each applicant for demonstrating his/her practical experience.
2. Forms 3 and 4 shall be used for demonstrating 2 Compulsory Unit of the experience required as shown in Table 4-1, and Application Form 5 shall be used for demonstrating three (3) Elective Units of the experiences required as shown in Table 4-2. These Application Forms shall be all prepared and submitted; otherwise, their application will be considered incomplete and will not be assessed.
3. Application Form 3 is used for a narrative engineering practice description for all engineering experience of applicant gained in the full 7-years prior to the date of his/her submittal of application documents.
4. Application Forms 4 and 5 describe the particular segments of the experiences selected among the 7-year experience for claiming competent of the applicant's experience.
5. In Forms 4 and 5, the applicant shall describe in details of his/her: (i) Personal contribution and responsibilities; (ii) Problems faced; (iii) Solution found; (iv) Engineering judgments made; and (v) Impact generated by such solution and judgments, for supporting the competency claimed .
6. When filling out the application Forms, applicants shall quote the claimed code numbers in their statements.
7. Experience of applicants described shall be arranged in a time sequence, with the most recent ones first, with claimed facts described as detailed as possible.
8. The Experience Units indicated in the Application Forms shall be basically limited to those applied to full-time employment only. However, part-time practical experiences may also be included should the assessors consider it appropriate. (delete The period of the experience indicated in the Application Forms shall be limited to

full-time employment.)

9. In addition to signature of the applicant, the top management person of the organization, which the applicant worked with, and direct supervisors of the applicants work mentioned in the statements shall also put their signatures on the Forms to certify correctness of the descriptions made in the statements by the applicant.
10. The above-mentioned signatory persons shall be legally responsible for true and correctness of the statements made in the Forms.
11. In case the certifying organization is a private entity, a copy of the organization's registration with relevant authorities, and a copy of labor insurance records or National Health Insurance records or Income Tax Records of the applicant shall be attached with these Statements.

## **Attachment 5 Criteria of Continuing Professional Development (Rev. 1)**

For the Continuing Professional Development (CPD), the **Committee** proposes the following credit-hours system as a basis for assessment of the continuing professional training undertaken by applicants.

The continuing professional training activities will be classified, according to various sponsors, into Categories I, II, and III as shown in the 3 tables attached hereunder: Table 5-1 shows Category I of the training activities sponsored, entrusted, authorized or recognized by the Central Government Agency (the Government) in charge of control and administration of local professionals: Table 5-2 shows Category II of the training activities sponsored by the **Committee**; Table 5-3 shows Category III of the training activities sponsored by the agencies other than the aforesaid two Agencies.

### **(1) For Application as an APEC Engineer:**

Within two years prior to the date of submittal of the application, the total credit-hours of CPD required for each of applicants shall be not less than 50, in which the credit-hours belonging to Category I shall not be less than 15. **For every additional discipline applied, the extra credit-hour of CPD activities required is 25, among which, however, the Type F, J, K, and L in Category III shall not be counted.**

### **(2) For Renewal of APEC Engineer Register:**

Every four (4) years for the renewal of registry, the total CPD credit-hours required for each applicant shall be not less than 200, in which the credit-hours belonging to Categories I and II shall be not less than 60 and 40 respectively. **For every additional discipline to be renewed, the extra credit-hour of CPD activities required is 100, among which, however, the Type F, J, K, and L in Category III shall not be counted.**

The credit-hours obtainable by the applicants shall be as shown in Tables 5-1, 5-2 and 5-3, if they have participated in each of the training activities and receipt of certificate duly issued by the activity sponsors. The applicants shall fill out Form 6 Summary of CPD claimed, and attached with relevant copies of the certificates for review by the **Committee**.

The **Committee** reserves the rights to review the details of the training activities of Category III for ensuring the levels of their training being acceptable. The details may include, such as handout materials, substantial contents of such activities, qualification of instructors, number of attendants, place and date for holding the activities, etc. Based on these review results, such CPD activities of Category III sponsored by other organizations may not be acceptable, for which the opinion of the **Committee** is substantial.

**Table 5-1 Credit-hours of Category I CPD Activities (Rev. 1)**

<b>Activities</b>	<b>Ways of Participation</b>	<b>Domestic/ International</b>	<b>Credit-hours</b>	<b>Maximum Credit-hours Limited</b>	<b>Remark</b>
<b>Type A</b> Seminars; Conferences; Workshops or Special Topic Lectures	As Participant	Both	1/Actual Hour	None	Verified by Certificate
	As Presenter	Domestic	10/Actual Hour	None	If more than one, then shared by the Authors or Translators equally
		International	20/Actual Hour	None	
	As Lecturer	Domestic	15/Actual Hour	None	
		International	30/Actual Hour	None	
	<b>Type B</b> Annual Meetings of Professional or Academic Societies	As Participant	Both	2/Each time	None
<b>Type C</b>	As Participant	Domestic	1/Actual Hour	None	

<b>Activities</b>	<b>Ways of Participation</b>	<b>Domestic/ International</b>	<b>Credit- hours</b>	<b>Maximum Credit-hours Limited</b>	<b>Remark</b>
Professional Training Programs of Governing Authority	As Lecturer	Domestic	10/Actual Hour	None	
<b>Type D</b> Published in Professional or Academic Periodicals at Home or Abroad or Translated Works Published thereon	As Author	Domestic	10/Per Article	None	If more than one, then shared by the Authors or Translators equally
		International	20/Per Article	None	
	As Translator	Domestic	4/Per Translation Work	None	
<b>Type E</b> On- job Educational Programs or Continuing Education under the Auspices of a Graduate School or Higher Institute	As Participant	Both	3/credit	None	Minimum 10 hours of lecture per credit
	As Lecturer	Both	10 /credit	None	
<b>Type F</b> Equivalent to a Training Program Recognized by the Central Governing Authority Training Program Recognized by the Central Governing Authority	As Participant	Domestic	1/Actual Hour	None	
	As Lecturer	Domestic	10/Actual Hour	None	

**Table 5-2 Credit-hours of Category II CPD Activities (Rev. 1)**

<b>Activities</b>	<b>Ways of Participation</b>	<b>Domestic/ International</b>	<b>Credit- hours</b>	<b>Maximum Credit-hours Limited</b>	<b>Remark</b>
<b>Type A</b> Seminars; Conferences; Workshops or Special Topic Lectures	As Participant	Both	1/Actual Hour	None	Verified by Certificate
	As Presenter	Domestic	10/Actual Hour	None	If more than one, then shared by the Authors or Translators equally
		International	20/Actual Hour	None	
	As Lecturer	Domestic	15/Actual Hour	None	
		International	30/Actual Hour	None	
<b>Type B</b> Professional Training Programs	As Participant	Domestic	1/Actual Hour	None	
	As Lecturer	Domestic	10/Actual Hour	None	
<b>Type C</b> Published by the APEC Engineer Monitoring Committee on Web site or Translated Works Published thereon	As Author	Domestic	10/Per Article	None	If more than one, then shared by the Authors or Translators equally
	As Translator	Domestic	4/Per Translation Work	None	

**Table 5-3 Credit-hours of Category III CPD Activities (Rev. 1)**

<b>Activities</b>	<b>Ways of Participation</b>	<b>Domestic/ International</b>	<b>Credit- hours</b>	<b>Maximum Credit-hours Limited</b>	<b>Remark</b>
<b>Type A</b> Seminars; Conferences; Workshops or Special Topic Lectures	As Participant	Both	1/Actual Hour	None	Verified by Certificate
	As Presenter	Domestic	10/Actual Hour	None	If more than one, then shared by the Authors or Translators equally
		International	20/Actual Hour	None	
	As Lecturer	Domestic	15/Actual Hour	None	
		International	30/Actual Hour	None	
<b>Type B</b> Annual Meetings of Professional or Academic Societies	As Participant	Both	2/Each time	None	
<b>Type C</b> Professional Training Programs	As Participant	Domestic	1/Actual Hour	None	
	As Lecturer	Domestic	10/Actual Hour	None	
<b>Type D</b> Published in Professional or Academic Periodicals at Home or Abroad or	As Author	Domestic	10/Per Article	None	If more than one, then shared by the Authors or Translators equally
		International	20/Per Article	None	

<b>Activities</b>	<b>Ways of Participation</b>	<b>Domestic/ International</b>	<b>Credit- hours</b>	<b>Maximum Credit-hours Limited</b>	<b>Remark</b>
Translated Works Published thereon	As Translator	Domestic	4/Per Translation Work	None	
<b>Type E</b> On- job Educational Programs or Continuing Education under the Auspices of a Graduate School or Higher Institute	As Participant	Both	3/credit	None	Minimum 10 hours of lecture per credit
	As Lecturer	Both	10 /credit	None	
<b>Type F</b> Services for Professional or Academic Associations	As Participant	Both	5/Each Appointment	10/ Per Year	
<b>Type G</b> Developing new inventions or obtaining patent rights	As Author	Both	50 /Per Patent	None	If more than one, shared by the Authors equally
<b>Type H</b> Social Services for Contributing to the Professions (Such as Earthquake Resistance Assessment Works after severe Earthquake)	As Participant	As required	2/case	10/ Per Year	If more than one person, shared by the contributors equally
<b>Type I</b> Review of Professional	As Reviewer	Domestic	2 /Per Paper	6/ Per Year	

<b>Activities</b>	<b>Ways of Participation</b>	<b>Domestic/ International</b>	<b>Credit- hours</b>	<b>Maximum Credit-hours Limited</b>	<b>Remark</b>
Papers		International	5 /Per Paper	10/ Per Year	
<b>Type J</b> Reading of Technical or Engineering Books or Correspondence Courses with Evidence	As Participant	Both	0.5/Actual Hour	1.Maximum CPD Credit Hour for Type J, K& L is 10/ Per Year 2.Verified by Documents	
<b>Type K</b> Technical Discussion Meeting within the Workplace	As Participant	Both	1/Actual Hour		
<b>Type L</b> Continuously Engaging in Profession Related Work that Needs Professional Judgment	As Participant	Both	1/Actual Hour		

Application Form 6, shall be filled in for showing details of the CPD activities undertaken by the applicant.

## **Attachment 6 Codes of Ethics for Chinese Taipei APEC Engineers**

After admitted into the registry, the Chinese Taipei APEC Engineers are committed to adhere to the fundamental principles of their respective profession guided by the norm of conduct consistent with following Code of Principles and Ethics. The Tenets of this Code are:

### **1. Responsibilities to the Society**

- 1.1 Dedicate and Adhere to the Law: comply with all laws and regulations, to ensure public safety and health, and to enhance public welfare.
- 1.2 Respect Nature: maintain ecological balance, treasure all natural resources and conserve the cultural heritage.

### **2. Responsibilities to the Profession**

- 2.1 Commit to Professionalism and Duty: consistently apply professional knowledge, adopt good standing engineering practices, and fulfill professional duty.
- 2.2 Be Creative and Enterprise: acquire the latest technological knowledge, strive to improve skills and raise the standards of product quality.

### **3. Responsibilities to the Client**

- 3.1 Render Services with Sincerity: serve with all competency and talent, protect with professional attention the interests of the Client and achieve each project's goals.
- 3.2 Faithfully Seek Mutual Benefits: establish mutual trust, secure a win-win consensus and create great engineering accomplishments.

### **4. Responsibilities to the Colleagues**

- 4.1 Cooperate with Specialists in Other Fields: strive to carry out the work within professional capacity, emphasize coordination and cooperation and improve efficiency of execution.
- 4.2 Ensure the Continuity of the Professional Contributions: dedicate to self-encouragement and mutual strengthening for advancement of engineering practice, pass on technical experiences to and encourage younger professionals.

I declare to obey and be bound by the above Codes.

Signed : \_\_\_\_\_

Date : \_\_\_\_\_

## **Attachment 7 Application Guidelines**

### **Table of Contents**

**1. Preface**

**2. Definition of APEC Engineer**

**3. Qualification Required as an APEC Engineer**

**4. Documents to be prepared by an Applicant**

**5. Assessment Procedure**

**6. Registration**

**7. Assessment Standard for Renewal of Registration**

**8. Audit**

**9. Fee Standard**

**10. Appeal Panel**

**11. Contact Person**

## 1. Preface

Under the Asia-Pacific Economic Cooperation (APEC), the APEC Engineer Coordinating Committee was established in 1999 for maintenance and development of authoritative and reliable decentralized registration of APEC Engineers, and for promotion of the acceptance of APEC Engineers in all participating economies. As a counter part to the Coordinating Committee, each participating economy is also required to organize and establish, when participating as a member, an APEC Engineer Monitoring Committee in its own economy. The Monitoring Committee will be vested with authority to assess and approve the registration of the APEC Engineers within its own economy according to the Assessment Statement, which has been accepted by the Coordinating Committee, when applied for admission as a member of the Coordinating Committee of APEC Engineer. The assessment operation shall be further subject to monitor by the Coordinating Committee in the manner stipulated in the Manual of the APEC Engineer. .

Following the requirements prescribed in the APEC Engineer Manual, both the Central Government (the Government) in charge of registration of local professional engineers in the Chinese Taipei, and the Chinese Institute of Engineers (the CIE) have jointly appointed 19 members to establish the Chinese Taipei APEC Engineer Monitoring Committee (the **Committee**). These members of the **Committee** are appointed from universities, experts, professionals associations, industrials and relevant government agencies.

The **Committee** is established within the CIE and authorized to be the sole body for carrying out all activities related to APEC Engineer, including assessment on qualification and registration of Chinese Taipei APEC Engineers.

The mechanisms for assessment of the eligibility and competency of APEC Engineers shall comply fully with the criteria prescribed in the Assessment Statement, which has been prepared based on the APEC Engineer Manual, and accepted by the Coordinating Committee.

These Guidelines define and explain the required qualifications of applicants; mechanism, evaluation criteria and processes of assessment; information to be provided by applicants; procedures for renewal of registration; and some other details related to submittal of application by

applicants in the Chinese Taipei.

These Guidelines are mostly generic in nature applicable for all engineering disciplines with particular terms to be specifically added, where necessary, for civil, structural and geotechnical engineering, which are intended by the **Committee** for application of assessment at present.

These Guidelines will be subject to revision or amendment from time to time, when required, and as soon as revised or amended, new edition will be issued by, or posted on web-site of the **Committee** for use of the applicants accordingly.

## **2. Definition of APEC Engineer**

According to the APEC Engineer Manual, APEC Engineer is defined as a professional, who has applied and demonstrated to the **Committee** with his/her application and qualification fully satisfying the procedures and criteria prescribed in this Assessment Statement, and has been assessed and accepted by the **Committee**. After acceptance, the applicants shall be listed on the Registration of APEC Engineers of the Monitoring Committee, and further reported to the Coordinating Committee for enlisted into their Overall APEC Engineer Registry.

After bi-lateral or multi-lateral negotiation is further completed, and relevant agreements are signed among participating economies, the registered APEC Engineers are able to provide their professional services across the boundaries of these agreement-signed economies.

## **3. Qualification Required as an APEC Engineer**

In order to be qualified, applicants shall satisfy the criteria listed hereunder:

The applicant shall have;

- (1) Completed an accredited or recognized engineering program, as stipulated in Attachment 2 enclosed;
- (2) Been assessed within their own economy as eligible for independent practice as stipulated in Attachment 3 enclosed;
- (3) Gained a minimum of seven (7) years of practical experience since graduation as stipulated in Attachment 4 enclosed;

- (4) Spent at least two (2) years out of the aforesaid seven (7) in responsible charge of significant engineering work as stipulated in Attachment 4 enclosed;
- (5) Maintained the Continuing Professional Development at a satisfactory level as stipulated in Attachment 5 enclosed; and
- (6) Committed to observe and to be bound by the Codes of Ethics of the Chinese Taipei Monitoring Committee as stipulated in Attachment 6 enclosed.

#### **4. Documents to be prepared by an Applicant**

Seven (7) Application Forms as prescribed and attached hereunder shall be all filled out and submitted by applicant to the **Committee** for review and assessment.

The details and requirements regarding each Application Form are further elaborated as follows and the applicant is suggested to read them carefully together with the referred Attachments, when these Application Forms are filled out. The Application Documents shall be made **in triple**, each included with 7 Forms prescribed hereunder:

**(1) Application Form 1: Self Assessment for Application Submittal**  
**(delete Covering Letter for Application Submittal)**

This Form is self-explanatory.

**(2) Application Form 2: Personal Information**

This Form is self-explanatory.

**(3) Application Form 3: General Engineering Experience Report**  
**(delete (7) Years of General Engineering Experience Report)**

This Form is a narrative engineering practice description demonstrating actual engineering experience gained by the applicant at least 7-years by the date of his submittal of application documents. As to the Criteria of Units of Competent Level, please refer to Attachment 4.

**(4) Application Form 4: Two (2) Years of Significant Experience**

This Form describes particular segments of the two-year experience

selected by the applicant from his 7-year experience for claiming to conform to the requirements of significant experience. As to the Criteria of Units of Competent Level, please refer to Attachment 4.

**(5) Application Form 5: Three (3) Elective Experiences Claimed**

This Form describes three segments of the Experience Units selected by the applicant from his 7-year experience for claiming to conform to the requirements set forth in the assessment. As to the Criteria of Units of Competent Level, please refer to Attachment 4.

**(6) Application Form 6: Summary of CPD Activities Claimed**

This Form is self-explanatory.

**(7) Application Form 7: Codes of Ethics of Chinese Taipei APEC Engineer**

Applicant shall sign on this Form to commit himself to obey the Codes.

The applicant shall also follow the remarks listed below for filling out the Forms:

- (a) Experience of the applicant described in each of Application Forms of 3, 4, and 5 shall be arranged in a chronological order, with the most recent ones first, with the claimed facts described as detailed as possible in a series of narrative-form.
- (b) Each narration related to Forms 4 and 5 should be emphasized with the details, which have been closely related to applicant's: (i) Personal contribution and responsibilities; (ii) Problems faced; (iii) Solution found; (iv) Engineering judgments made; and (v) Impact generated by such solution and judgments, for supporting competence he/she claimed.
- (c) For the Application Forms of 3, 4, and 5, the applicant shall quote duly the claimed code numbers in the spaces provided.
- (d) The period of the experience indicated in the statements shall be limited to full-time employment.
- (e) In addition to signature of the applicant, the top management person of the organization, which the applicant worked with, and direct

supervisors of the applicants' work mentioned in the Application Forms of 3, 4, and 5, shall also put their signatures on the Forms to certify correctness of the descriptions made.

- (f) The above-mentioned signatory persons shall be legally responsible for true and correctness of the statements made by the applicant.
- (g) In case the certifying organization is a private entity, a copy of the organization's registration with relevant authorities, and a copy of labor insurance records or National Health Insurance records or Income Tax records of the applicant shall be attached with these Forms.

## **5. Assessment Procedure**

The qualifications required for an APEC Engineer are mentioned above under Item 3 of the Guidelines. The **Committee** shall strictly follow the Guidelines for assessment of the qualifications of applicants. And each of the assessment criteria is briefly discussed as follows for reference of the applicant.

### **(1) Education of the Applicant**

The following criteria are considered acceptable:

- (a) If he/she has successfully completed his/her higher education program and obtained degree from a school outside of the Chinese Taipei, whose education programs have duly met any one of the requirements stipulated in the Manual of APEC Engineer; or
- (b) If he/she has successfully completed his/her higher education program and obtained degree from schools in the Chinese Taipei, whose education programs have been duly accredited by the IEET; or
- (c) If he/she had successfully completed his/her higher education program and obtained degree from a school before 1998 (inclusive), which was established and had been operated by the Government of the Chinese Taipei. But this criterion shall become null and void after 2008.

The Education Background filled in under Application Form 2 by applicant shall be checked by the Preliminary Review Team (the PRT) to see whether the education program of the applicant is conformable to any

of the aforesaid criteria.

If the applicant is graduated from overseas universities, a certificate shall be attached accordingly to Application Form 2 as a proof.

The application shall be not accepted, if none of the above criteria is applicable.

## **(2) Applicant Eligible for Independent Practice**

In the Application Form 2, the applicant shall duly indicate details of information regarding the Professional Qualification Examination and Professional Practical License he passed or obtained as prescribed in Attachment 3.

In case the applicant is not eligible for practice in Chinese Taipei, his/her application shall be rejected.

## **(3) Competence of Practical Experience of Applicant**

Application Forms 3, 4, and 5 shall be initially reviewed by the PRT. If his submitted documents pass the review, he/she shall be informed by the PRT to participate an Interview. The applicant shall be, during the Interview, required to make a 20-minute presentation first, and then to answer questions raised by the PRT. The Interview shall be carried out in English to examine proficiency in English of the applicant, to serve as one of the important considerations for the PRT to accept the application.

## **(4) Requirements of Continuing Professional Development**

A continuing professional development (CPD) shall be always required for all APEC Engineers as stipulated in the Manual of APEC Engineer. Accordingly, an evaluation for such credit-hours shall be performed by the PRT as follows (Also refer to Attachment 5):

### **(a) For Application to become an APEC Engineer:**

Within two years before submittal of the application for registry as an APEC Engineer, the total credit-hours of CPD required for each applicant shall be not less than 50, in which the credit-hours belonging to Category I shall not be less than 15.

**(b) For Renew of Registry of APEC Engineer:**

For every 4 years of renewal of registry, the total credit-hours for each applicant shall be not less than 200, in which belonging to Categories I and II shall be not less than 60 and 40 respectively.

The credit-hours claimed shall be filled out in Application Form 6 attached herewith by the applicant and subject to assessment by the PRT in accordance with the requirements indicated in Attachment 5 Criteria of Continuing Professional Development.

**(5). Commitment for Obey of Codes of Ethics**

The Codes of Ethics for the Chinese Taipei as shown in Attachment 6 shall be read carefully and understood by the applicant. At the bottom of the page, the applicant shall fix his signature to commit obeying and to be bound by it.

Furthermore, the applicant shall commit that any matter that may affect his/her fitness for admission to, and the continued inclusion as the Chinese Taipei APEC Engineer shall inform the **Committee** as soon as it happens.

**6. Registration Procedure**

The **Committee** shall individually inform the assessed result to each applicant in due course. The applicant who has been notified of passing the assessment shall get in touch with the **Committee**, when informed by the **Committee** to proceed with the formalities, such as handing in photos, paying further relevant fees, etc. For the fees, please refer to Item 9, Fee Standards. Upon completion of registration, the **Committee** shall issue an “APEC Engineer Certificate”, and the information of such applicants will be posted on the website of the **Committee**.

The applicant shall note that the effectiveness of each time of registration is four (4) years, which shall be subject to renewal, if the applicant desires.

**7. Assessment for Renewal of Registration**

With regard to the renewal process, the assessment procedure is same as the first application for registration, except subject to further additional

assessment of the Continuing Professional Development at a satisfactory level and CH requirements, prescribed as one of five requirements set forth for the APEC Engineer. Please refer to Attachment 5 for details.

## **8. Audit**

Pursuant to requirements of the Manual of APEC Engineer, the **Committee** shall conduct periodical audits at a specified interval on the APEC Engineers, who have registered with and been selected by the **Committee** on a random basis. The items to be audited may include: confirming the records of CPD; confirming correctness and accuracy of the previously submitted statements, documents, or certificates; investigating present practicing status for making sure that they are not involved in any misconduct or in any activity resulting in temporarily suspension or revoke of their licenses, etc.

The aforesaid audit shall be carried out by the Audit Panel, which shall be specifically established for this purpose by the **Committee**.

Any registered APEC Engineer shall, if he is so selected for audit by the Audit Panel, be promptly responsive to requests made by the Panel, including submittal of clarification documents, or presence at meetings for verbal explanation or clarification regarding the points audited.

## **9. Fee Standards**

The Fee Standards, currently effective for assessment, enrollment, or renewal, are indicated in the following Table 7-1 for reference, which may be subject to change, if required.

**Table7-1 Fee Standards (Rev. 1)**

Item Fees	Application *1	Registration *2	RENEWAL*3
	Per Each Case	Per Each Case	Per Four Years
<b>Fee (NTD)</b>	<b>6000</b>	<b>10000</b>	<b>10000</b>

Note: \*1 : To be paid, upon submittal of Assessment Application.

\*2 : **To be paid upon receipt of the Approval of Application, and lasting four years.**

\*3 : **To be paid at start of every four years as long as the registration is to be maintained**

## **10. Appeal Panel**

The Appeal Panel is set up in the **Committee** for receiving and treating complains or protest raised by applicants regarding operation of assessment, audit, or registry, etc. All complaints and protests which must be in written form, shall be carefully studied and resolved on the fair basis by the Appeal Panel. Recommendations of the Appeal Panel shall be submitted to the **Committee** for final review and approval, before formally responded to the complaints.

The contact person for complains or protest is indicated in the following section.

## **11. Contact Persons**

### **(1) For Information, or Inquiry:**

Mr.  
Mail Address:.  
Telephone:  
Email:  
Web-site:

### **(2) For Appeal or Complaint**

Mr.  
Mail Address:.

Telephone:

Email:

Web-site:

**(End of this Attachment )**

## **Application Forms (Rev. 1)**

**Form 1: Self Assessment for Application Submittal (Rev. 1)**

**Form 2: Personal Information (Rev. 1)**

**Form 3: General Engineering Experience Report (Rev. 1)**

**Form 4: Two (2) Years of Significant Experience (Rev. 1)**

**Form 5: Three (3) Elective Experiences Claimed (Rev. 1)**

**Form 6: Summary of CPD Activities Claimed (Rev. 1)**

**Form 7: Code of Ethics of the Chinese Taipei APEC Engineer.**

## Form 1: Self Assessment for Application Submittal

(Shaded blank to be filled out by the Committee)

<b>Discipline Applied</b>		<b>Application Number</b>	
<b>Name of Applicant</b> (English, in PRINT)		<b>Signature</b> (English)	
<b>Name of Applicant</b> (Chinese, in PRINT)		<b>Signature</b> (Chinese)	

According to the requirements set forth in the Guidelines issued by the Chinese Taipei Monitoring Committee (the Committee), I have prepared and submitted herewith this APEC Engineer Application Document *in TRIPLES* for applying registry with the Committee.

**The Application Documents include the following (please check; if enclosed):**

	Forms	Items Checked				
1	<b>Self Assessment</b>	<input type="checkbox"/> Complete				
	<b>Personal Information</b>	<input type="checkbox"/> Complete				
	<b>Higher Education</b> (Please select one and mark V in <input type="checkbox"/> )	<input type="checkbox"/> Local <input type="checkbox"/> National University/College <input type="checkbox"/> Accredited Program				
		<input type="checkbox"/> Overseas <input type="checkbox"/> FEISEAP <input type="checkbox"/> Washington Accord <input type="checkbox"/> 1 <sup>st</sup> Step Exam of JCEA <input type="checkbox"/> Eng. Exam by US				
2	<b>Professional Qualification Exam</b>	<table border="1" style="width: 100%; border-collapse: collapse;"> <tr> <td style="width: 30%;">Discipline</td> <td style="width: 40%;">(related to applied discipline only)</td> <td style="width: 10%;">Year Passed</td> <td style="width: 20%;">(A.D.)</td> </tr> </table>	Discipline	(related to applied discipline only)	Year Passed	(A.D.)
Discipline	(related to applied discipline only)	Year Passed	(A.D.)			
	<b>Professional Practice</b>	<input type="checkbox"/> Consulting <input type="checkbox"/> Construction				
3	<b>General Engineering Experience</b>	_____ Years _____ Months Claimed (Min. 7 years)				
4	<b>2 Years of Significant Experience</b>	_____ Years _____ Months Claimed (Min. 2 years)				
5	<b>3 Elective Experiences Claimed</b>	Total Number of Elective Experiences Claimed _____ ( Circle Min. 3 codes)				
		Code No. O-1- a, b, c, d      O-2- a, b, c      O-3- a, b Code No. O-4- a, b      O-5- a, b, c      O-6- a, b, c, d, e				
6	<b>Summary of CPD Activities Claimed</b>	Total _____ Credit-Hours(CH) Admitted, including Category I _____ CH; Category II _____ CH; Category III _____ CH				
7	<b>Code of Ethics</b>	<input type="checkbox"/> Signed <input type="checkbox"/> Date of Signature				

I hereby declare that all documents submitted above are true and correct, and will assume all consequence and responsibilities arisen out as a result of any untrue statement made in the submitted documents.

<b>Submitted by (Signature of Applicant)</b>		<b>Date</b>	
<b>Date of Application Received</b>		<b>Checked by Administrator</b>	
	DD      MM      Year		

## Form 2: Personal Information

### Personal Particulars

<b>Name (English)</b>	Given Name + Family Name			2 inches photo (Taken within last 2 months)
<b>Name (Chinese)</b>				
<b>Date of Birth</b>	DD	MM	Year (A.D.)	
<b>ID No.</b>				
<b>Affiliation</b>	(English)			
	(Chinese, if available)			
<b>Position*</b>	(English and Chinese)			
<b>Business Address</b>	(English or Chinese)			
<b>Home Address</b>	(English or Chinese)			
<b>Business Tel.</b>		<b>Fax</b>		
<b>Home Tel.</b>		<b>e-mail</b>		
<b>Education Background</b>				
Department	Name of School	Graduation Year (A.D.)	Degree Conferred*	
<b>Professional Engineer Qualification (1. 考試及格證書；2. 技師證書)</b>				
	Discipline	Year (A.D.)	Issued by	Certificate No.*
1. Qualification Examination Passed*				
2. Professional Engineer Certificate*				
<b>Professional Practice (1. 技師執業執照；2. 營造業專任工程人員)</b>				
<input type="checkbox"/> Consulting	1. Professional Practicing License*	Discipline		
		Number		
		Expired date	DD	MM
<input type="checkbox"/> Construction	2. Date of Approved Letter Received*	DD	MM	Year (A.D.)

**Note: \* Certified photo copy to be attached.**



### Form 4: Two (2) Years of Significant Experience

<b>Name of Applicant</b>		<b>Project Name (if available)</b>			
<b>Work No.</b> (refer to Form 3)		<b>Code No.</b> (refer to Table 1-1-1)		<b>Position/Title</b>	
<b>Starting Month</b>	MM YY (A.D.)	<b>Ending Month</b>	MM YY (A.D.)	<b>Period (months)</b>	

(Describe in details of your: (1) Personal contribution and responsibilities; (2) Problems faced; (3) Solution found; (4) Engineering judgments made; and (5) Impact generated by such solution and judgments. Please use about 50-200 words. If space is not enough, extra pages may be added and attached hereunder.)

#### Certifying Organization and Attester

<b>Certifying Organization</b>		<b>Address</b>			
<b>Attester</b> (in PRINT)		<b>Signature</b>		<b>Date</b>	
<b>Relationship to Applicant</b>		<b>Tel.</b>		<b>Email</b>	

### Form 5: Three (3) Elective Experience Claimed

<b>Name of Applicant</b>		<b>Project Name (if available)</b>		
<b>Work No.</b> (refer to Form 3)		<b>Code No.</b> (refer to Table 1-1-2)		<b>Position/Title</b>
<b>Starting Month</b>	MM YY (A.D.)	<b>Ending Month</b>	MM YY (A.D.)	<b>Period (months)</b>

(Describe in details of your: (1) Personal contribution and responsibilities; (2) Problems faced; (3) Solution found; (4) Engineering judgments made; and (5) Impact generated by such solution and judgments. Please use about 50-200 words. If space is not enough, extra pages may be added and attached hereunder.)

#### Certifying Organization and Attester

<b>Certifying Organization</b>		<b>Address</b>		
<b>Attester (in PRINT)</b>		<b>Signature</b>	<b>Date</b>	
<b>Relationship to Applicant</b>		<b>Tel</b>	<b>Email</b>	

**Form 6: Summary of CPD Activities Claimed for Year \_\_\_\_\_**

Referring to Attachment 1-2 Criteria of Continuing Professional Development, use the table below as a summary of those records.  
 Relevant certificates shall be also attached for review. (Use one sheet for each year)

<b>Activity</b>	<b>Date</b>	<b>Category</b>	<b>Type</b>	<b>CPD Activity/Topic/Provider</b>	<b>Actual Hours</b>	<b>Credit-Hours</b>	<b>Certificates Attached</b>
1							
2							
3							
4							
5							
6							
7							
8							
9							
10							
11							
12							
13							
14							
15							
16							
17							
18							
19							
20							
21							
22							
<b>Total CPD Credit-Hours for Category I</b>							
<b>Total CPD Credit-Hours for Category II</b>							
<b>Total CPD Credit-Hours for Category III</b>							
<b>Total CPD Credit-Hours for year _____</b>							
<b>Name of Applicant</b>							

## **Form 7: Codes of Ethics for Chinese Taipei APEC Engineer**

After admitted into the Chinese Taipei Economy, APEC Engineers are committed to adhere to the fundamental principles of their respective profession guided by the norm of conduct consistent with following Code of Principles and Ethics. The Tenets of this Code are:

### **1. Responsibilities to the Society**

1.1 Dedicate and Adhere to the Law: comply with all laws and regulations, ensure public safety and health, and to enhance public welfare.

1.2 Respect Nature: maintain ecological balance, treasure all natural resources and conserve the cultural heritage.

### **2. Responsibilities to the Profession**

2.1 Commit to Professionalism and Duty: consistently apply professional knowledge, adopt good standing engineering practices, and fulfill professional duty.

2.2 Be Creative and Enterprise: acquire the latest technological knowledge, strive to improve skills and raise the standards of product quality.

### **3. Responsibilities to the Client**

3.1 Render Services with Sincerity: serve with all competency and talent, protect with professional attention the interests of the Client and achieve each project's goals.

3.2 Faithfully Seek Mutual Benefits: establish mutual trust, secure a win-win consensus and create great engineering accomplishments.

### **4. Responsibilities to the Colleagues**

4.1 Cooperate with Specialists in Other Fields: strive to carry out the work within professional capacity, emphasize coordination and cooperation and improve efficiency of execution.

4.2 Ensure the Continuity of the Professional Contributions: dedicate to self-encouragement and mutual strengthening for advancement of engineering practice, pass on technical experiences to and cultivate younger professionals.

I declare to obey and be bound by the above Codes.

Signed : \_\_\_\_\_

Date : \_\_\_\_\_

**(END OF APPLICATION FORMS)**